

FEATURES

- 2.4 GHz 802.11 Wireless LAN Access Point/Bridge
- High Performance Ethernet to WLAN Bridge
- 10/100 Mbps Ethernet IEEE 802.3 Interface
- Fully Supports DSSS 1, 2, 5.5, 11 Mbps
- Windows OS SNMP Configuration and Management
- 64 or 128-bit WEP Encryption
- Firmware upgradeable
- Option for High-Power output for Long-Range Communication
- Multi Mode Operation.

MACH LAN IP RADIO ACCESS POINT/BRIDGE SPECIFICATION

Description	11 Mbps Wireless LAN Access Point / Bridge
Ethernet Connection Standard	IEEE 802.3 10/100BaseT (RJ-45) IEEE 802.11 (Wireless LAN), IEEE 802.3 (Ethernet)
Data Security	64 or 128-bit WEP Encryption
Operation Modes	Access Point Mode, Wireless Bridge (Client AP), Building to Building (Bridge) Point-to-Multipoint (Bridge)
Roaming	Among APs on the same subnet load balancing
Management	SNMP Manager, TFTP, USB Utility, DHCP
Network Interface	10/100 (Auto-negotiation)
System RAM	4MB
Flash ROM	2MB
Firmware Upgrade	DFU Utility, TFTP or via available USB port

RADIO CHARACTERISTICS

Modulation	Direct Sequence Spread Spectrum
Frequency Range	2.4 - 2.4835 GHz
Operating Temp.	-40°C - +60°C
Frequency Stability	0.0005% over -40°C to +60°C
TX Output Power	100 mW Standard, 27 dBm Optional
Antenna Input	Female "N" Connector
Range	Up to 6 Miles @ 11 Mbps (12.8 Km @ 11 Mbps)
Data Rate	11 Mbps: CCK, 5.5 Mbps: CCK, 2 Mbps: DQPSK, 1 Mbps: DBSK
Channels	11 - US (FCC), 14 - Japan (MCK), 13 - Other counties (ETS)
Receiver Sensitivity	-96dBm @ 1Mbps, -93dBm @ 2Mbps, -89dBm @ 5.5 Mbps, -87dBm @ 11Mbps
LED Indicators	Power - Power LED, RX - Receiving data from other LAN, TX Transmitting data to other LAN
USB Port	Firmware Upgrade or System Management
Prime-Power Req'mt.	85 - 264 VAC, 50/60 Hz, 25 Watts
System-Power Req'mt.	12 VDC, 1.5A
Dimensions	9.3" W x 11.3" H x 5.3" D
Weight	6 Lbs (2.7kg)
Warranty	2 Years Parts & Labor returned to factory

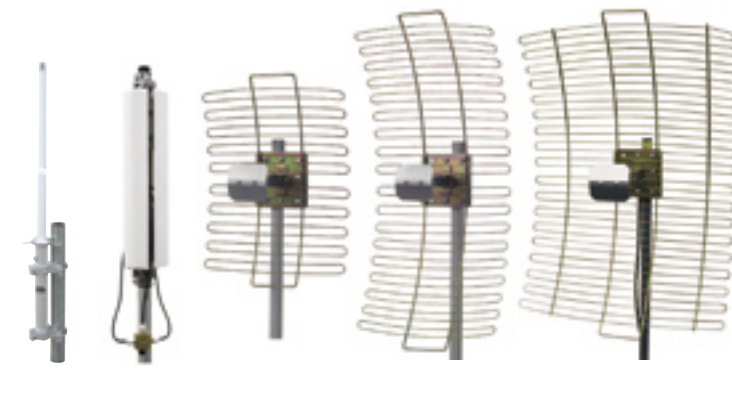


11.31" (28.7cm) h X 9.3" (23.6cm) w X 5.3" (13.5cm) d

With pole mount Omni Antenna (L)

Detail of mounting hardware (R)

WTI MACH LAN-IP 2.4 GHz System
NEMA-4X Enclosures



24" or 48" OA-2410
6"x26" SO-2414
22"x19"x15" FA-2418
35"x20"x17" FA-2421
35"x27.5"x16" FA-2424

WTI MACH LAN Fixed Site Antennas



Wireless LAN System
MACH SERIES



WTI's MACH LAN IP Radio systems set the standard in point-to-multipoint broadband wireless networking solutions.

The WTI-IP-2400 Series delivers exceptional performance through all climates, and easy and inexpensive installation. However the WTI-IP 2400 offers more.

Put the Benefits of WTI's MACH Series Wireless IP Into Your Network.

This product is an ideal networking solution for enterprises building their own private networks looking for high speed data rates. The WTI-IP 2400 operates in infrastructure mode. In this mode the Radio operates as an Access Point with portal capabilities. Access Point enables mobile wireless LAN user's access to wired based Ethernet LANs. With roaming capability, the radio provides Wireless LANs to automatically load between Access Points located in different wired LANs at multiple locations.

There are Three Different MACH Systems to Choose From.

WTI gives your system flexibility plus unparalleled network security.

MACH I This system is for short-range transmission up to 2 miles @ 11 Mbps. In the point-to-point configuration the system utilizes an internal linear polarized microstrip antenna on both the Access Point and the Remote Location. In the point-to-multipoint configuration the Access Point utilizes an external, mast-mounted, unity-gain, omnidirectional antenna, and the Remote Locations utilize internal linear polarized microstrip antennas.

MACH II This system is for mid-range transmission up to 4 miles @ 11 Mbps. In the point-to-point configuration the system utilizes an internal linear polarized microstrip antenna on the Access Point and an external, mast-mounted, medium-gain, truncated "fan" antenna on the Remote Location. In the point-to-multipoint configuration, the Access Point utilizes an external, mast mounted, medium-gain omnidirectional antenna, and the Remote Locations utilize mast-mounted, medium-gain, truncated "fan" antennas.

MACH III This system is for longer-range transmission up to 6 miles @ 11 Mbps. In the point-to-point configuration the system utilizes an external, mast mounted, high-gain, truncated "fan" antenna on both the Access Point and the Remote Location. In point-to-multipoint configuration the Access Point utilizes an external, mast-mounted high-gain omnidirectional antenna, and the Remote Locations utilize external mast-mounted, high-gain, truncated "fan" antennas.

WTI The Intelligent Solution®
www.gotowti.com

Call WTI and speak with an applications engineer to configure a system to perfectly suit your needs.

Due to WTI's continuing efforts to engineer the best product that is most responsive to our customer's needs, the above specifications are subject to change.

Wireless Network Configurations - WTI Mach Series IP Radios

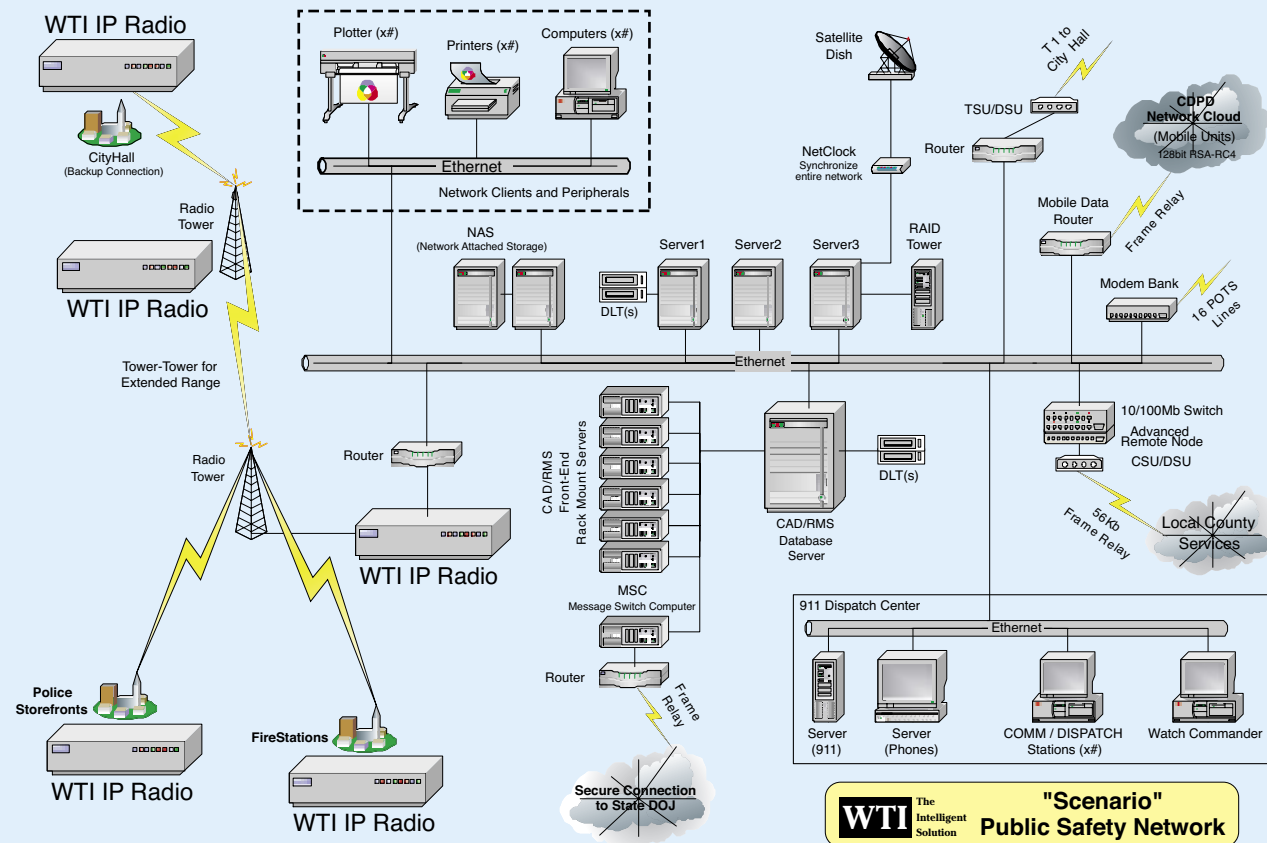
In today's world, it is increasingly important that any organization move, manage, and share massive amounts of information quickly and efficiently. For enterprises with multiple locations, making this mission critical connectivity can be a daunting task.

Whether it is building to building, or point to multipoint locations, the challenge is to get your data to the designated locations, quickly, reliably and securely. A **WTI** wireless network is paramount to your success.

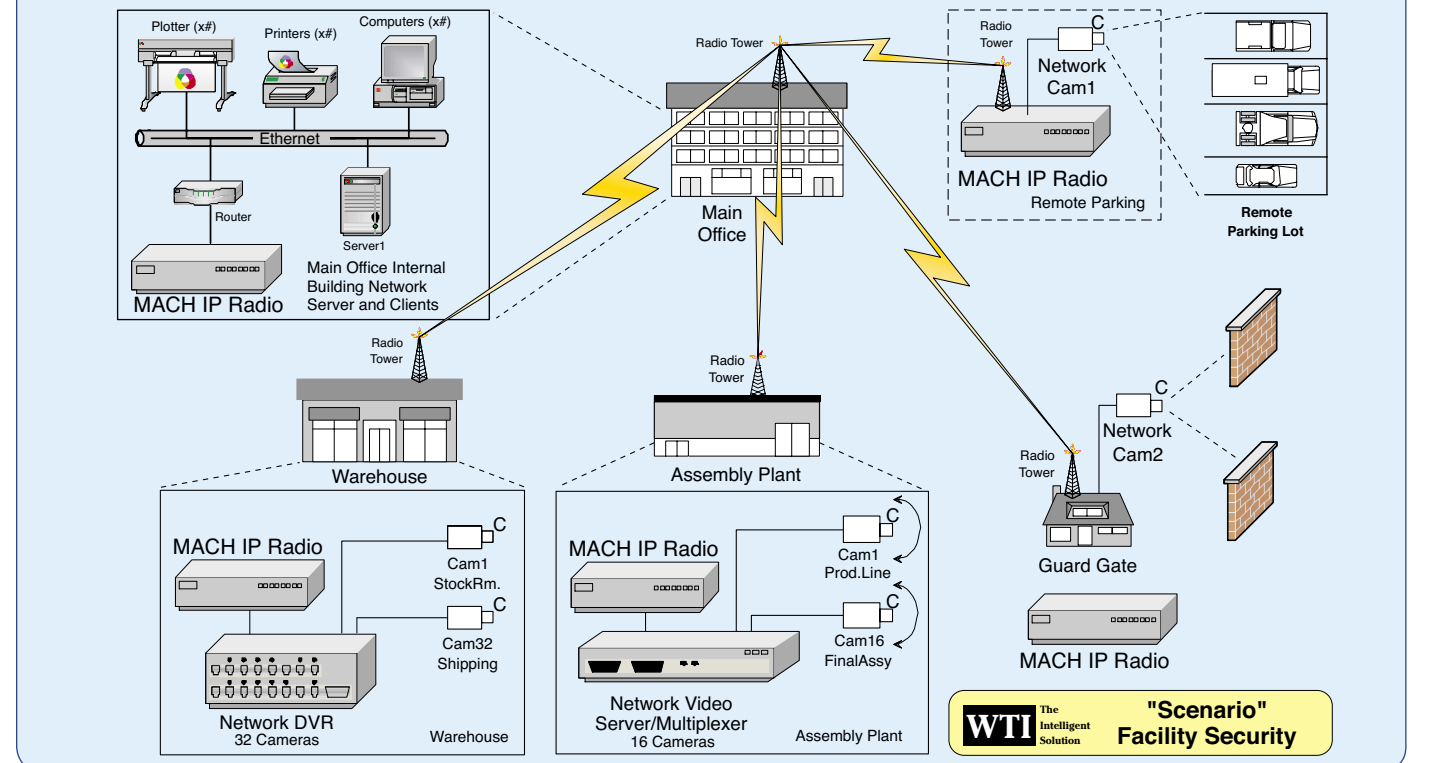
WTI Mach Series IP Radios communicate anywhere, anytime and to anyone. Why lease lines when you can own? Quick payback! Customize your **WTI** Mach Series

IP Radios to meet your most stringent specifications. Below are a few wireless network suggestions.

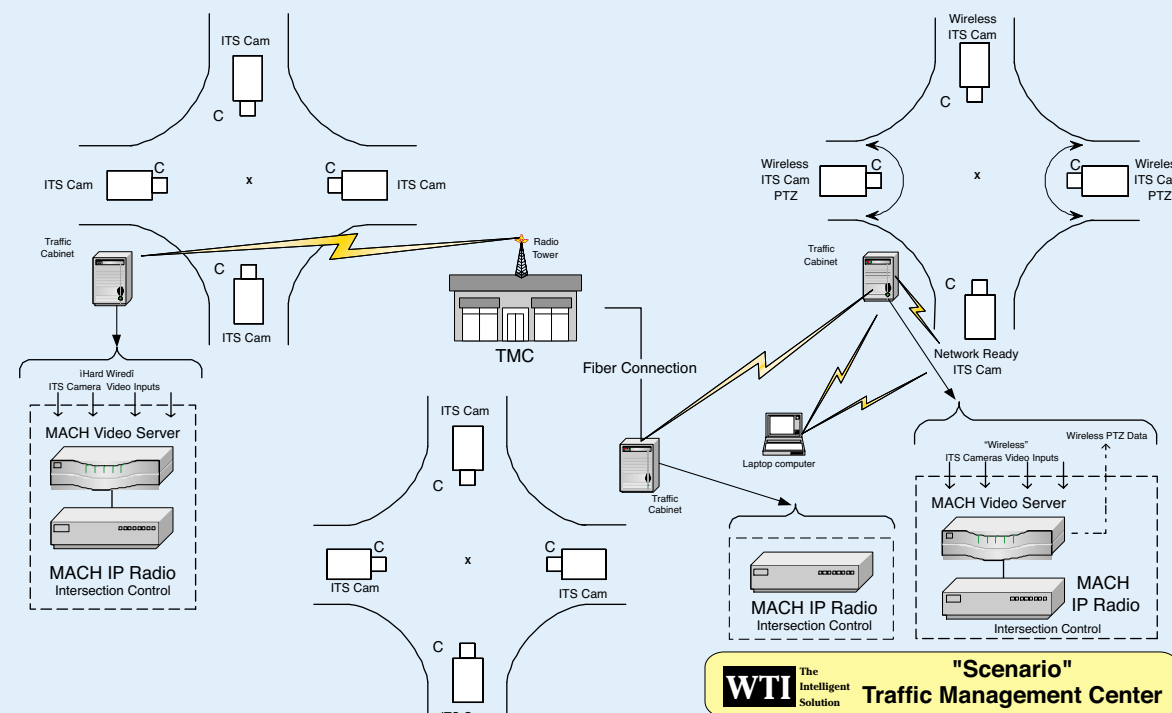
The WTI Mach Network Radios provide High Speed Connectivity with no Barriers.



Organizations can share large databases, files & information quickly & easily across multiple locations



The WTI Mach Series Radios get Up and Running Quickly.



WTI Mach Series Radios offer high performance with flexibility and simplicity.

